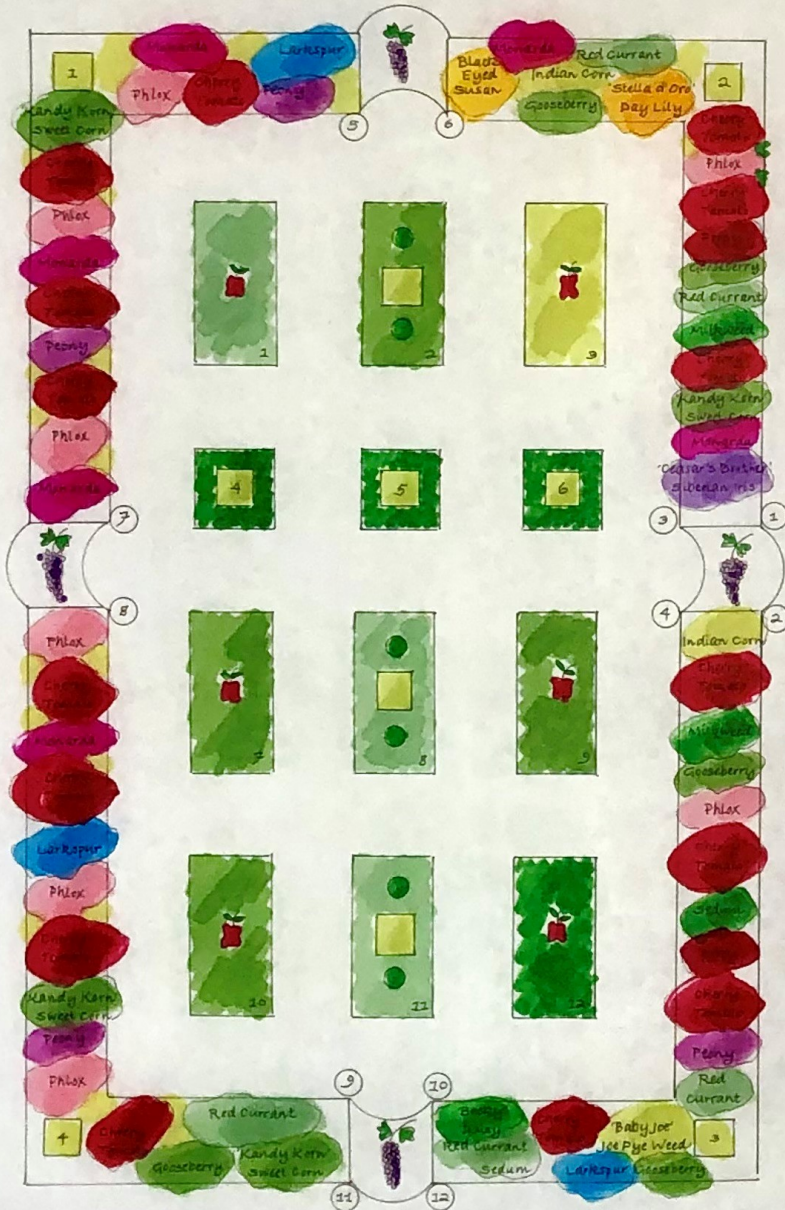


The 2023 St. Mary Church Garden of Eden



Plants and Materials Key	Plants and Materials
Bed #1	Mixed radish varieties and rhubarb with garlic chive edging in early spring, followed by 'Fortex' beans growing up apple tree and French sorrel.
Bed #2	Mixed radish varieties in early spring followed by lovage, Swiss chard and 'Queen Anne's Pocket Melon' climbing up tuteur.
Bed #3	Mixed radish varieties, mixed carrot varieties with purple chive edging in early spring, followed by 'Jedi' jalapeno peppers, and 'Fortex' pole beans growing up apple tree.
Bed #4	Mixed radish varieties in early spring, followed by 'Limka' pole beans growing up tuteur with pepper mint edging.
Bed #5	Mixed radish varieties in early spring, followed by 'Golden Gate' pole beans growing up tuteur with grapefruit mint edging.
Bed #6	Mixed radishes in early spring, followed by 'Monte Cristo' pole beans growing up tuteur with chocolate mint edging.
Bed #7	Mixed radish varieties, rhubarb with lemon balm edging in early spring, followed by 'Musica' pole beans growing up apple tree and curly parsley.
Bed #8	Mixed radish varieties in early spring followed by 'Carminat' pole beans growing up tuteur, lovage and mixed kale varieties.
Bed #9	Mixed radish varieties with purple chive edging in early spring, followed by 'Sunshine' pole beans growing up apple tree, 'Jedi' jalapeno peppers, with 'Cosmos' and 'Jade' bush beans.
Bed #10	Mixed radish varieties and rhubarb with purple chive edging in early spring followed by curly parsley, and 'Mallbu' pole beans climbing up apple tree.
Bed #11	Mixed radish varieties in early spring followed by lovage, joi chol, dera and 'Marketmore' cucumbers climbing up tuteur.
Bed #12	Mixed radish varieties in early spring, followed by 'Golden Star' zucchini, 'Bush Baby Hybrid' green summer squash, 'Jedi' jalapeno peppers, and 'Seychelles' pole beans climbing up tuteur.

Plants and Materials Key	Plants and Materials
Scattered throughout all raised beds	Pill
Pot #1	Epazote
Pot #2	Borage
Pot #3	Sage
Pot #4	Rosemary
Pot #5	Oregano
Pot #6	Oregano
Pot #7	Bay leaf tree underplanted with oregano
Pot #8	Bay leaf tree underplanted with oregano
Pot #9	Epazote
Pot #10	Lavender
Pot #11	Rosemary
Pot #12	Lemon Thyme
Perimeter Garden Tuteur #1	'Kentucky Wonder' Pole Bean
Perimeter Garden Tuteur #2	'Violet Podded' Pole Bean
Perimeter Garden Tuteur #3	'Violet Podded' Pole Bean
Perimeter Garden Tuteur #4	'Kentucky Blue' Pole Bean
Designed by:	Sallye Boege St. Mary Garden Ministry